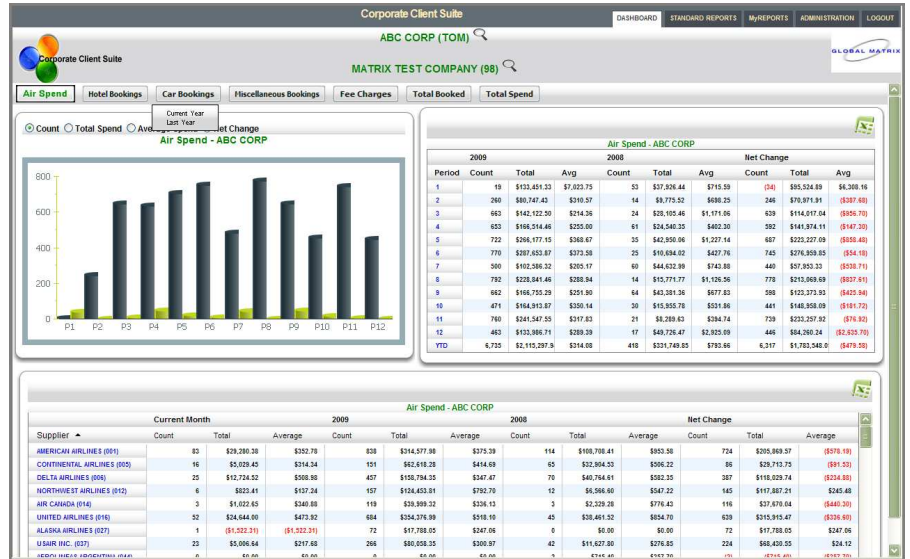


**Solution:**

Agencies and corporate clients require sophisticated, up to date and flexible travel management reporting tools to monitor and track corporate travel spend without the bother of administering a tool.

Global Matrix' provides corporate agencies and corporate clients an easy to use, self serve, real time web based dashboard with ad hoc reporting and dynamic drill down capability.

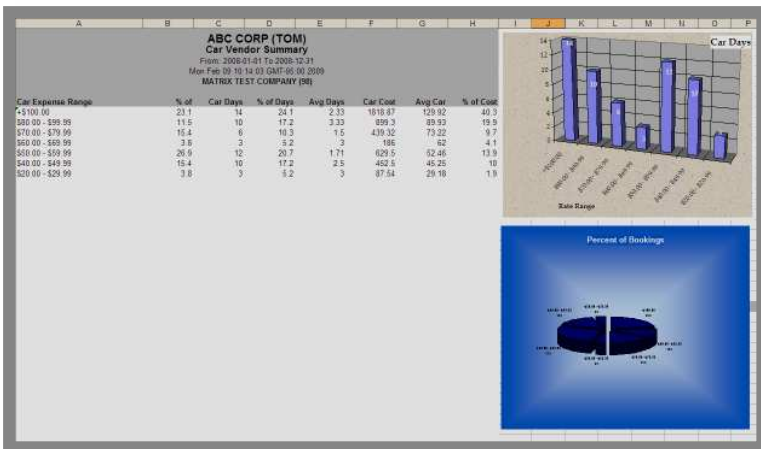


**Proven Benefits:**

- Increased revenue opportunity through vendor negotiations.
- Monitored travel spending delivers reduced costs.
- Monitored travel policy compliance ensures best rates.
- Ability to monitor travel for security concerns for client safety.
- Data Consolidation from multiple sources to increase accuracy and minimize manual effort.

**Key Features:**

- Internet based point and click tool for corporate travel agencies and clients;
- Multi period trend and graphical reporting;
- Real Time Client Based reports;
- Dynamic Drill Down capability;
- User Driven Ad Hoc Reporting
- Global data consolidation with multiple layers of client hierarchy;
- Geographical reporting;
- Include agency logo on dashboard;
- Output currently available in Excel
- Schedule and email report capability



real time Travel Management reporting for Executives and corporate travel agencies

|   |  |
|---|--|
| <b>MyMatrix</b>                           | Our core transaction system is web based allowing easy access anywhere, anytime. Real-time data at a sub-second response time. Expertly integrated with our auxiliary suite of services. |
| <b>General Ledger</b>                     | Industrial-strength financial General Ledger (G/L) package.  |
| <b>Web Services</b>                       | Bi-directional communication between Matrix and third party systems  |
| <b>WebReporting</b>                       | Delivers standard scheduled reports via the Internet.  |
| <b>Imaging</b>                            | Archive of historical reports for easy reference.  |
| <b>MatrixqR</b>                           | 'Simply sophisticated' custom report query tool.   |
| <b>MatrixeD</b>                           | 'Executive Dashboard' for instant access to critical business data.  |
| <b>Custom development/ services</b>       | Create the best possible custom solutions for the lowest price.  |
| <b>Matrix FrontLine</b>                   | Customer relationship management, marketing and reporting.   |
| <b>Network hosting</b>                    | Actual cost savings while ensuring expert handling of your network - 24/7.   |
| <b>Application Service Provider (ASP)</b> | Proven cost efficiencies... concentrate on your company's core competency - selling travel - and outsource certain management and reporting functions.                                   |

***An entire suite of travel agency services, expertly integrated and designed by travel agencies for travel agencies .... It's proven!!***